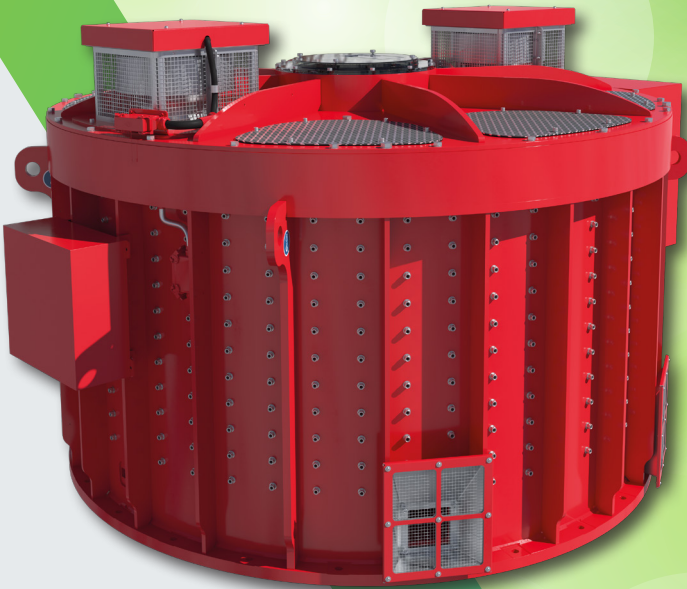


Clean and quiet DirectDrive technology, which is in line with an eco-responsible approach: lower energy consumption, no fossil fuel consumption, reduced noise pollution, and increased safety of the operation and maintenance teams.



- ▶ simple, clean and silent motor with few moving parts
- ▶ simplified maintenance
- ▶ very high availability
- ▶ more than 250 installations equipped worldwide
- ▶ in service since 1999
- ▶ 7 motor sizes available
- ▶ -15 acoustic decibels (dBA)*
- ▶ up to 8% savings in energy consumption
- ▶ up to 3 tons of CO₂ saved per year for a chairlift*
- ▶ heat recovery in the electrical cabinet

Compatible ✓ new ropeways ✓ existing ropeways

*compared to an equivalent chairlift equipped with a geared motor unit



DESCRIPTION



DirectDrive is a technology which, instead of a conventional drive chain (geared motor), allows the direct drive of the drive sheave without requiring an intermediate gearbox.

Its high efficiency and environmental benefits are appreciated by ropeway operators around the world.

FEATURES & BENEFITS

Features and performance

A wide range made up of 7 sizes with a range of torques from 144 to 630 kNm, which are adapted to the exact need of each installation. No gearbox oil.

Availability and Safety

Intrinsic redundancies (coolers, rings) for a very high level of availability and safety. The motor is maintained at the right temperature by two cooling units. If one of the cooling units fails, the motor can continue to ensure the operation of the installation.

The motor consists of up to 8 rotor and stator rings.

If one of the rings fails, the motor operates at reduced power, allowing passengers to be transported in complete safety.

Maintenance and Worker Safety

Maintenance reduced due to the absence of gearbox.

Easy access to components.

No visible rotating parts, even if rings need to be replaced.

Quick replacement of a ring.

ENVIRONMENT

- ▶ Design and manufacture by HTI Group.
- ▶ Average reduction of 5% in energy consumption compared to a geared motor = 3 tons of CO₂ saved per year for a chairlift in the use phase.
Reduction of 15 dB(A) on acoustic emissions.
No gearbox oil = no oil change, reduced risk of environmental pollution and reduced risk of fire.
Possible to recover waste heat from drives and electrical cabinets, allowing partial heating of a nearby room.
- ▶ No return to the factory for overhaul throughout its life cycle: significant transportation energy savings.

