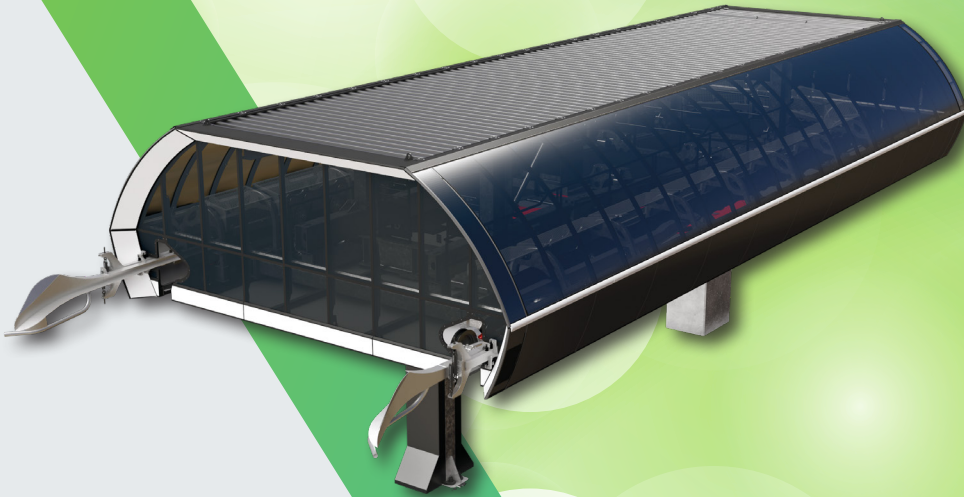


LIFE (Low Impact For Environment) is the name of the covering for the new LIFE station. Its qualitative, modern design enhances the aesthetic appeal of the station.



- sleek, qualitative and modern design
- reinforced sealing
- improved water management
- enhanced safety for operators
- customizable

Compatible ✓ new ropeways ✓ existing ropeways



SEMER
INGÉNIERIE ÉLECTRIQUE

Σ **sigmacabins**

DESCRIPTION

The LIFE station covering is the new covering developed with a view to improving water management, increasing safety for the operation and maintenance teams, and producing larger quantities of renewable solar energy (Power option).

FEATURES & BENEFITS

Improved sealing with top side panels superimposed on their frame

Side faces look smoother and seamless.
Top side panels are very close to each other.

Improved water management (rain, melting snow)

All water from the roof is collected in two gutters in the upper part, flows via a channel inside the station, and is then evacuated along a tower where it can be recovered. Recovery of runoff water flowing on the top sides via a gutter integrated into the design and located only above the areas where there is a risk of slipping on the platforms. Larger surface, allowing full coverage of all passengers in a 6-seater chair. Water drops are guided by the profile separating the top and bottom side panels, so that they don't fall on the passengers in the chairs.

Secure station access

Secure side access via an external staircase. This prevents operators from crossing the path of vehicles when they enter the station. Secure side access via an external staircase. This prevents operators from crossing the path of vehicles when they enter the station.

Customization and optional accessories

Wide choice of colours for the bevelled edges of the tympanum and for the profile separating the top and bottom side panels. Possible to put lighting in the bevelled edges of the tympanum. Choice of panelling for the station undercover (wood or honeycomb composite panels). Possible to place a communication display (static or screen) on the rear tympanum.

ENVIRONMENT

- ▶ Eco-design approach, POMA design, wood from France as an option.
- ▶ Manufactured by POMA. No need to paint the support frames of the top side panels.
- ▶ Pre-assembly on POMA Group's industrial sites, for optimized transport and time saving during on-site construction.
- ▶ Improved sealing = greater durability of station components.
- ▶ LIFE Power option integrates semi-rigid photovoltaic panels instead of polycarbonate top panels, allowing the production of up to 9kW of electricity per side face in the 28-tyre station (i.e. +28% compared to Multix covering).

