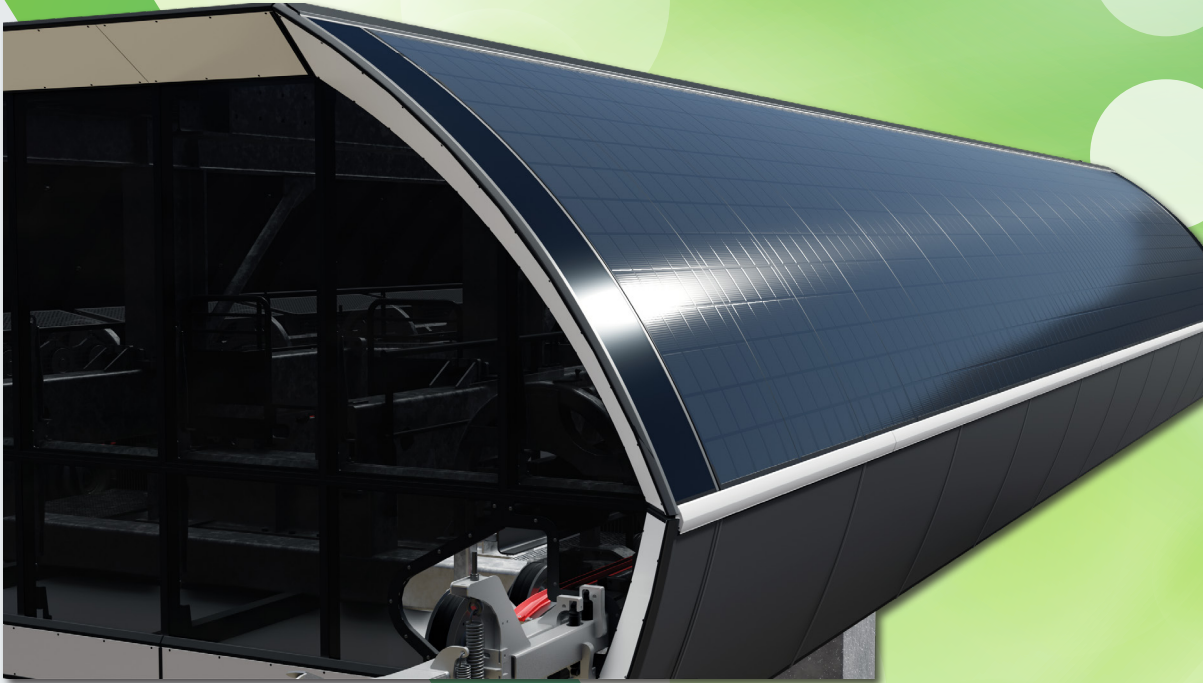


# Power option for station cover

The Power option offers an additional source of renewable energy perfectly integrated into the station cover design, by installing semi-rigid photovoltaic modules instead of side glazing.



- >20% efficiency for each photovoltaic module
- patented system
- 7 POMA lifts in service with Power option
- 2 days for installation per side face on existing Multix station cover
- up to 1 ton of CO<sub>2</sub> avoided per year for a detachable chairlift\*

Compatible ✓ new ropeways ✓ existing ropeways

\*compared to an equivalent station cover without Power option



## DESCRIPTION

The Power Option consists of semi-rigid eV+ photovoltaic solar panels that can be installed on Multix and LIFE station covers (both new and existing), instead of polycarbonate top side panels.

It is an additional source of renewable energy.  
It is designed for discreet integration.

## FEATURES & BENEFITS

### Renewable energy production

5% of the annual consumption of the installation is offset by the electricity produced by the solar panels.

Increased efficiency in mountains due to the natural cooling of the solar cells and the reflection of light rays on the snow (albedo).  
Installed capacity from 7 to 12 kWp per side face depending on the length of the cover.

### Integration and design

The eV+ modules match the geometry of the cover, particularly suited to curved shapes.  
With an equivalent station length, LIFE Power

cover can produce 28% more energy compared to Multix Power cover.  
A unique slippery coating removes snow from the panel for optimal production.  
Tried-and-tested solution in all weather conditions.

### Cost-effective solution

Self-consumption or resale of the surplus to an electricity supplier.

## ENVIRONMENT

### ► Encapsulation technology

limiting the need for raw materials.  
The eV+ module is 50% lighter than a traditional framed solar panel and is lighter than a polycarbonate panel.  
Elimination of glass and aluminium compared to traditional solar panels.

► Pre-assembly in POMA Group factories (SIGMA, SACMI), wiring and connection by SEMER.  
Certification of the installation by POMA Group for a turnkey offer.

► No impact on construction thanks to pre-assembly at the factory.  
Quick connection using simple connectors.

► Up to 1 ton of CO<sub>2</sub> avoided per year for a detachable chairlift equipped with eV+ modules on its two side faces, thanks to locally produced renewable energy.

► Better durability of UV-sensitive station components (tyres, belts, sheaths and electrical cables) because the modules are opaque.

► eV+ modules are "PV CYCLE" certified.  
End-of-life solar panels are managed by an international organization.

